



EMERALD HILL



Taking Affordable Housing To The Next Level

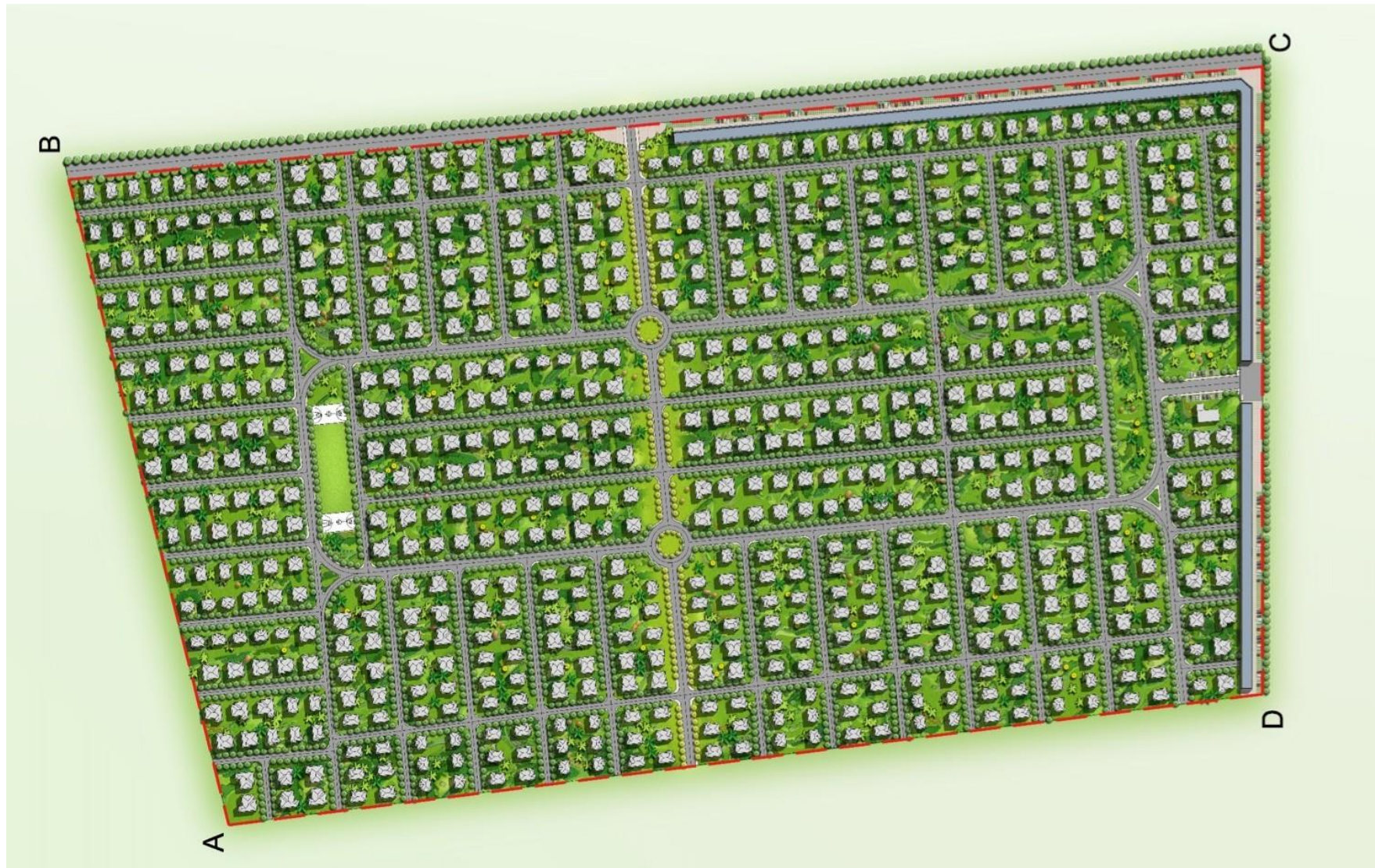
EMERALD HILL 2025 (PHASE 4)

Blending Relaxation and Sophistication to Create the Ideal Home for You.

Emerald Hill gated community is a residential development in Lusaka, Zambia's outskirts. The development is already proving to be the ideal location for anyone seeking tranquillity and a luxurious lifestyle while being close to Lusaka's dynamic up and coming residential zones, providing residents with the best of both worlds.

This exceptional development consists of nine sections and a total of 693 houses on 47 hectares of land, all of which will be completed to the finest standards.

A few houses are already finished and occupied, while the remainder is still under construction. Our houses range from spacious studios to high-end four-bedroom units, with the majority of houses enjoying a wonderful outlook across a gorgeous park in our gated community.



Master Plan

Community Area: 47 hectares | Total Units: 693



*Modern conveniences and amenities, all
within your reach.*



Double Story Shopping Mall
Shops Size: 56m², 96m² and 169m²
Shop Price: Start From \$30,800



Your Comfort Is Our First Focus.

S1-Semi-Detached One Bedroom 55m² 10m x 25m

Front view of the S1 semi detached one bedroom apartment, on a 10x25m plot size, with a floor area of 55m²

Image showcasing the floor plan of the semi detached one bedroom house.

Unit Price

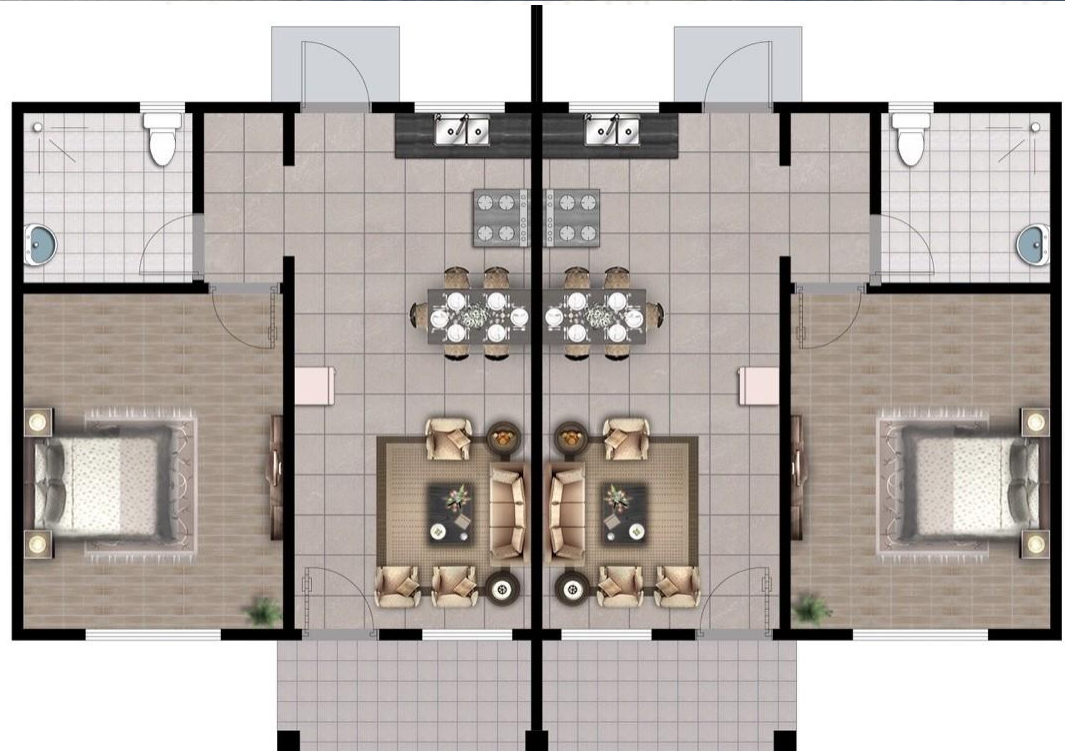
Completion Price
\$28,435

Shell Price
\$21,175

Key

Completion Price: Includes a complete house with fittings

Shell Price: A complete house, but client to install all the fittings



S2-Semi-Detached Two Bedrooms

70m² 10.5m x 25m

Front view of the S2 semi detached two bedrooms apartment, on a 10.5mx25m, with a floor area of 70m².

Image showcasing the floor plan of the semi detached two bedrooms house.



Unit Price

Completion Price
\$36,190

Shell Price
\$26,950

Key

Completion Price: Includes a complete house with fittings

Shell Price: A complete house, but client to install all the fittings



T1-Two Bedrooms

76m² 17m x 25m

Front view of the T1 stand alone two bedrooms house, on a 17x25m plot size, with a floor area of 76m²

Image showcasing the floor plan of the two bedrooms house.



Unit Price

Completion Price
\$39,292

Shell Price
\$29,260

Key

Completion Price: Includes a complete house with fittings

Shell Price: A complete house, but client to install all the fittings



T2-Two Bedrooms

86m² 18m x 25m

Front view of the T2 stand alone two bedrooms house on a 18x25m plot size, with a floor area of 86m²

Image showcasing the floor plan of the two bedrooms house.



Unit Price

Completion Price
\$44,462

Shell Price
\$33,110

Key

Completion Price: Includes a complete house with fittings

Shell Price: A complete house, but client to install all the fittings



T3-Three Bedrooms

105m² 20m x 25m

Front view of the T3 stand alone three bedrooms house, on a 20x25m plot size, with a floor area of 105m²

Image showcasing the floor plan of the three bedrooms house.



Unit Price

Completion Price
\$54,285

Shell Price
\$40,425

Key

Completion Price: Includes a complete house with fittings

Shell Price: A complete house, but client to install all the fittings



T4-Three Bedrooms

125m² 20m x 25m

Front view of the T4 stand alone three bedrooms house, on a 20x25m plot size, with a floor area of 125m²

Image showcasing the floor plan of the three bedrooms house.



Unit Price

Completion Price
\$64,625

Shell Price
\$48,125

Key

Completion Price: Includes a complete house with fittings

Shell Price: A complete house, but client to install all the fittings



T5-Four Bedrooms

135m² 21m x 25m

Front view of the T5 stand alone four bedrooms house, on a 21x25m plot size, with a floor area of 135m²

Image showcasing the floor plan of the four bedrooms house.



Unit Price

Completion Price
\$69,795

Shell Price
\$51,975

Key

Completion Price: Includes a complete house with fittings

Shell Price: A complete house, but client to install all the fittings



T6-Four Bedrooms

157m² 21m x 25m

Front view of the T6 stand alone four bedrooms house, on a 21x25m plot size, with a floor area of 157m²

Image showcasing the floor plan of the four bedrooms house.



Unit Price

Completion Price
\$81,169

Shell Price
\$60,445

Key

Completion Price: Includes a complete house with fittings

Shell Price: A complete house, but client to install all the fittings





A Safe, Secure And Joyful Community.



Front View



Back View

D1-Double Stories Four Bedrooms 196m² 21m x 25m

Front view of the D1 stand alone four bedroom double stories house, on a 21x25m plot size, with a floor area of 196m²

Unit Price

Completion Price
\$137,000

Shell Price
\$101,300

Key

Completion Price: Includes a complete house with fittings
Shell Price: A complete house, but client to install all the fittings



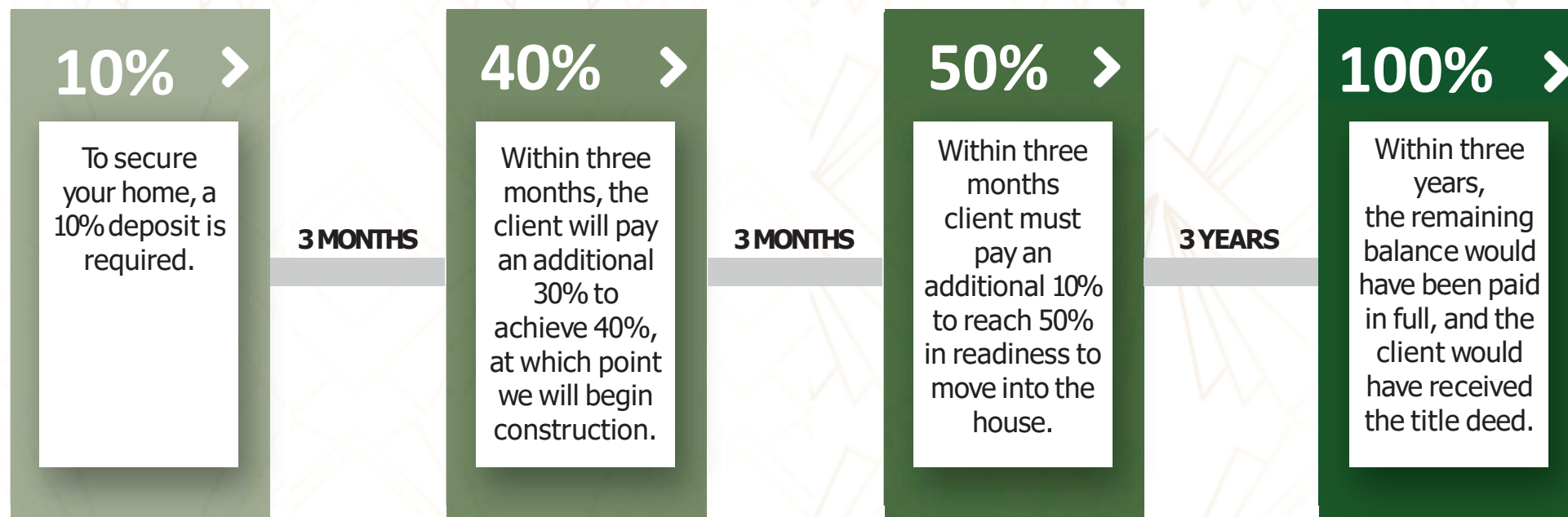
Groud Floor



First Floor

Image showcasing D1 floor plan four bedrooms double stories house.

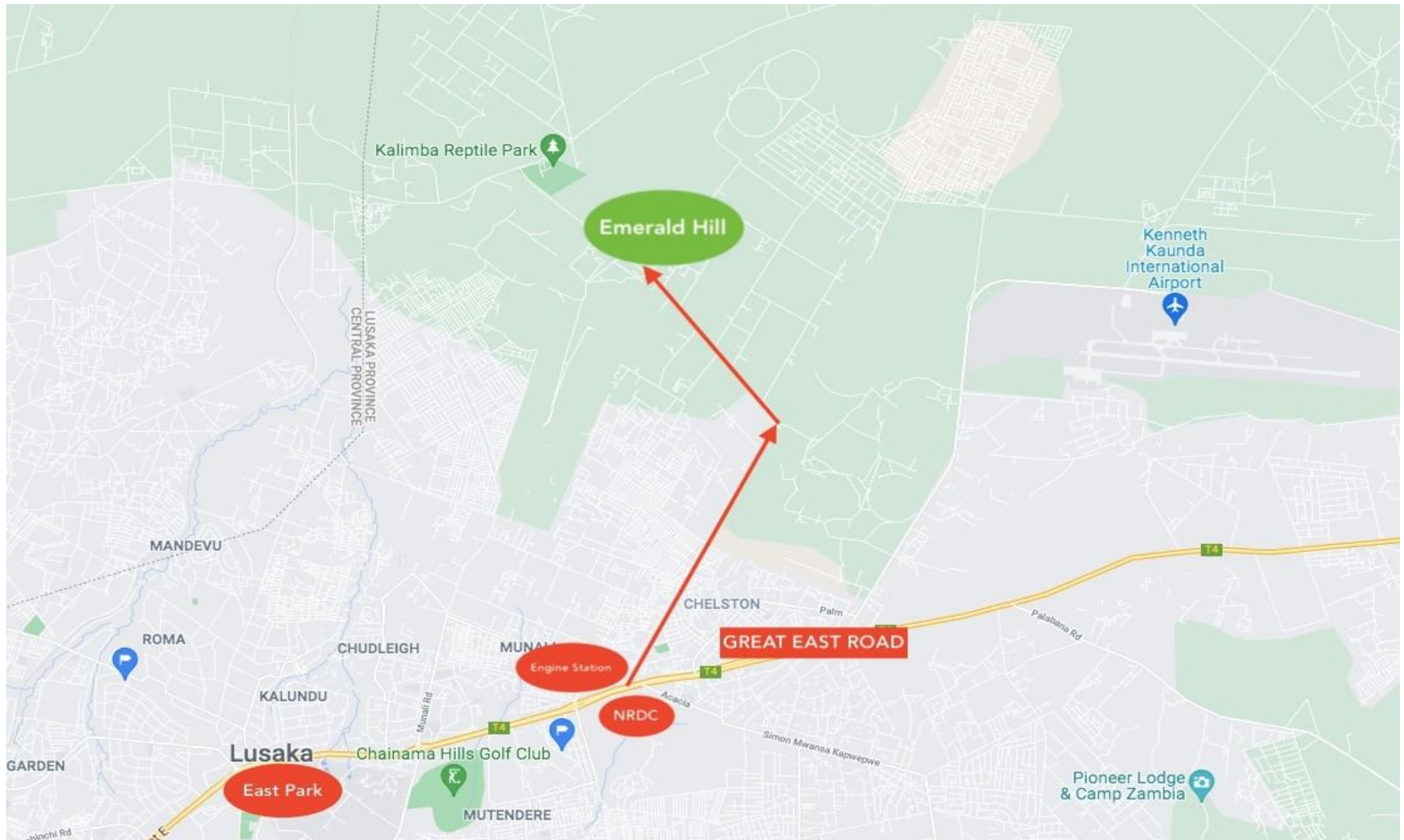
Payment Plan



NOTE:

- At 40% payment of instalments, construction will begin.
- At 50% payment of instalments, the client is allowed to take occupancy once the construction is complete.
- Payment of the remaining 50% balance within 6 months will incur no interest. For 1 year, the interest fee is 5%. For 2 years, the interest fee is 7%, and for maximum of 3 years instalments, at 10%.

Emerald Hill Location





EMERALD HILL

Own Your Home Now

Emerald Hill Chamba Valley, Lusaka, Zambia



Contact Details

African Panorama Investment Group Limited

+260 776 033 080

Plot No.18, Cheetah Road, Kabulonga, Lusaka, Zambia

info@africapanoramazm.com | www.africapanoramazm.com