



EMERALD HILL



Taking Affordable Housing To The Next Level

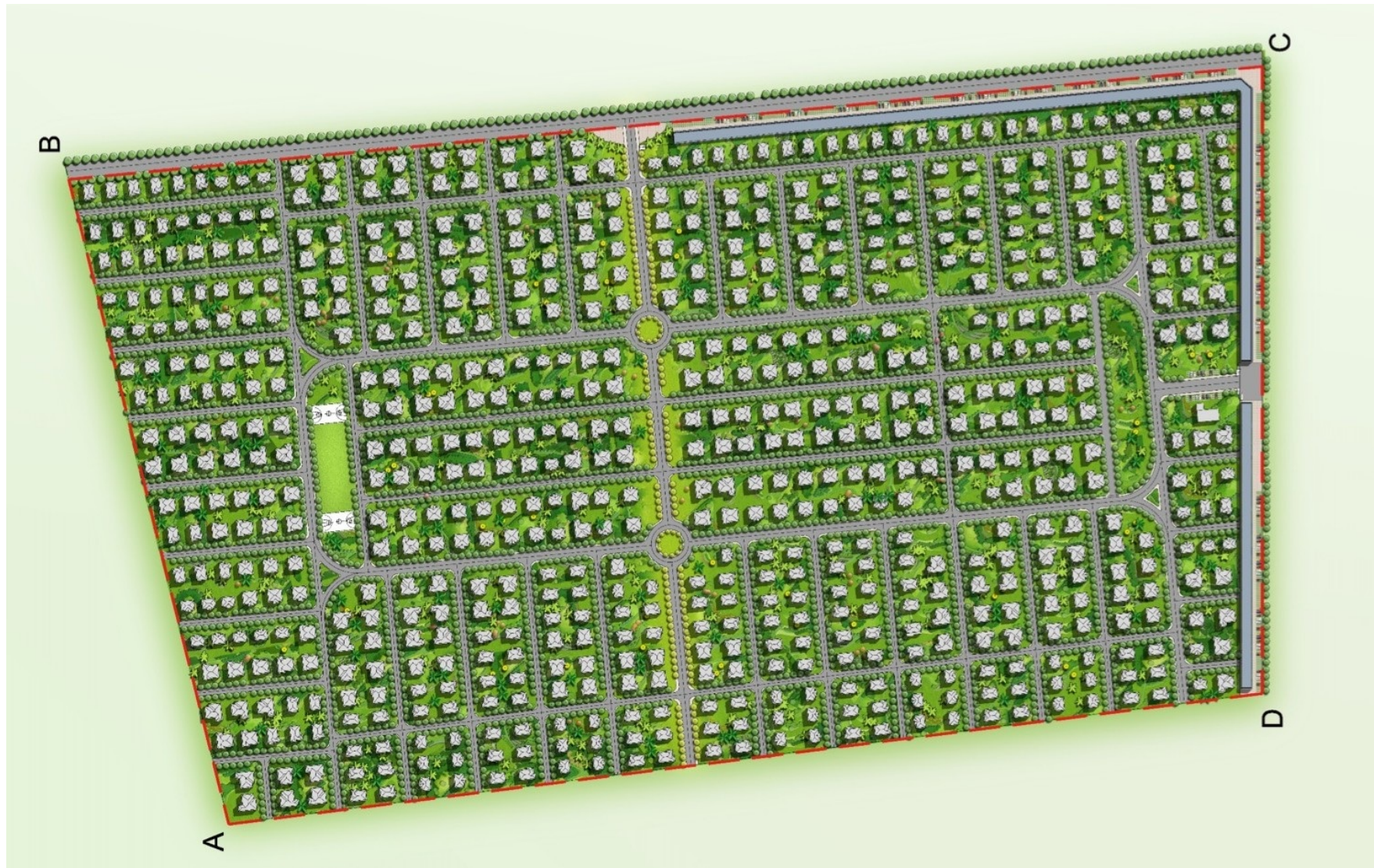
EMERALD HILL 2023

Blending Relaxation and Sophistication to Create the Ideal Home for You.

Emerald Hill gated community is a residential development in Lusaka, Zambia's outskirts. The development is already proving to be the ideal location for anyone seeking tranquillity and a luxurious lifestyle while being close to Lusaka's dynamic up and coming residential zones, providing residents with the best of both worlds.

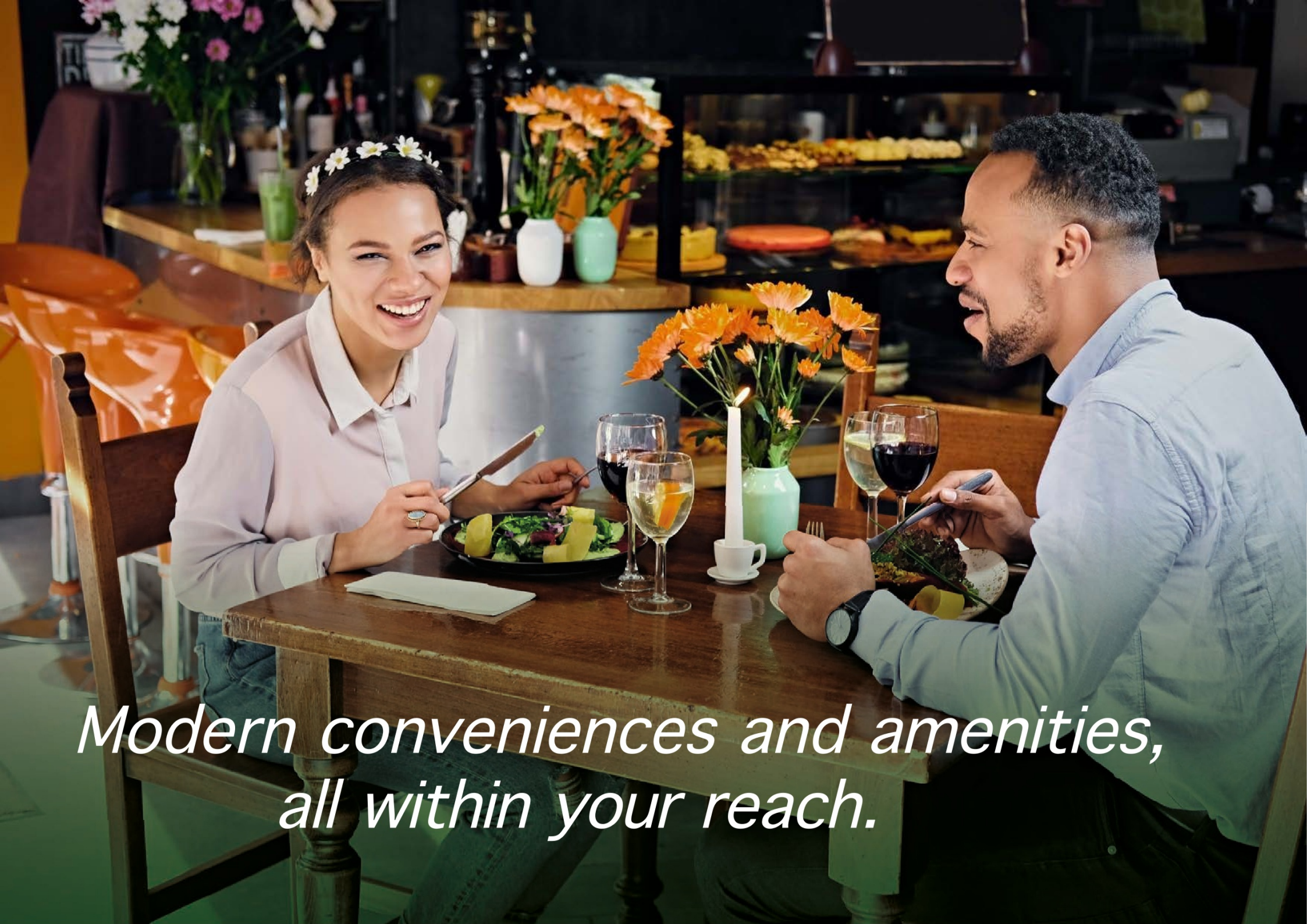
This exceptional development consists of nine sections and a total of 693 houses on 47 hectares of land, all of which will be completed to the finest standards.

A few houses are already finished and occupied, while the remainder is still under construction. Our houses range from spacious studios to high-end four-bedroom units, with the majority of houses enjoying a wonderful outlook across a gorgeous park in our gated community.



Master Plan

Community Area: 47 hectares | Total Units: 693



*Modern conveniences and amenities,
all within your reach.*



***Double Story Shopping Mall
Shops Size: 40m², 62m² and 123m²
Shop Price: Start From \$22,000***



Your Comfort Is Our First Focus.

S1-Semi-Detached One Bedroom

55m² 10m x 25m

Front view of the S1 semi detached one bedroom apartment, on a 10x25m plot size, with a floor area of 55m²

Image showcasing the floor plan of the semi detached one bedroom house.



Unit Price

| Completion Marketing Price | Completion Group Price |
|----------------------------|------------------------|
| \$24,750 | \$23,100 |

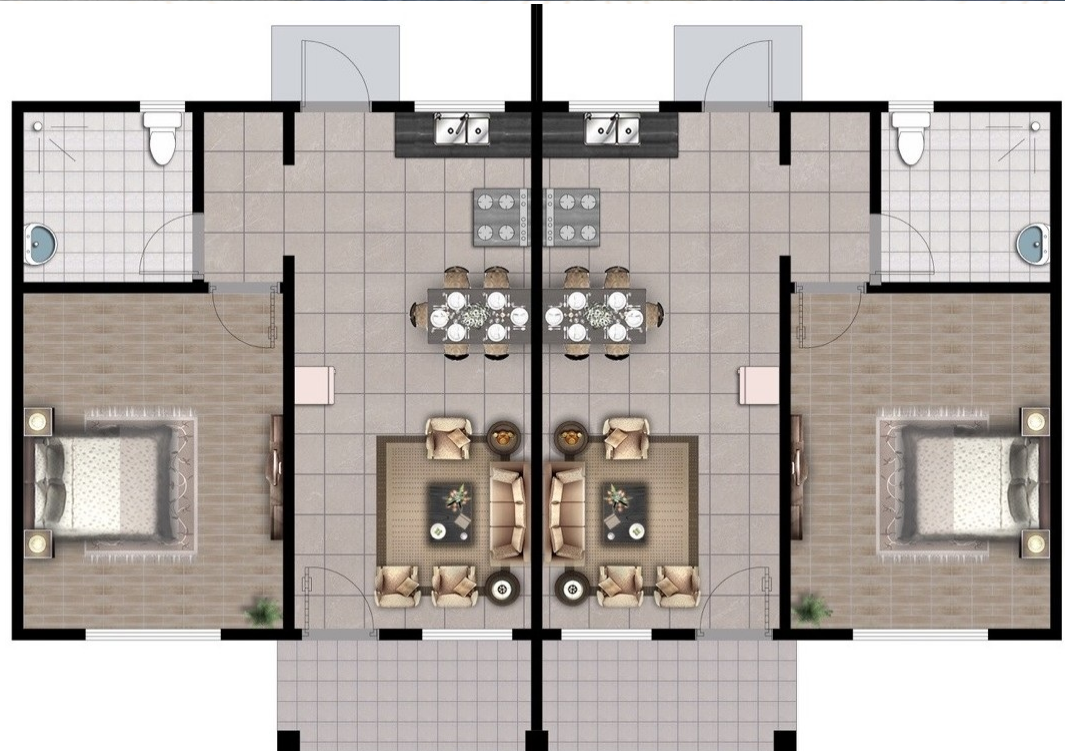
| Shell Marketing Price | Shell Group Price |
|-----------------------|-------------------|
| \$18,750 | \$17,100 |

Key

Marketing Price: Includes a complete house with fittings

Group Purchase: Purchasing under a group of people

Shell Price: A complete house, but client to install all the fittings



S2-Semi-Detached Two Bedrooms 70m² 10.5m x 25m

Front view of the S2 semi detached two bedrooms apartment, on a 10.5mx25m, with a floor area of 70m².

Image showcasing the floor plan of the semi detached two bedrooms house.



Unit Price

| Completion Marketing Price | Completion Group Price |
|----------------------------|------------------------|
| \$31,500 | \$29,400 |

| Shell Marketing Price | Shell Group Price |
|-----------------------|-------------------|
| \$23,860 | \$21,760 |

Key

Marketing Price: Includes a complete house with fittings

Group Purchase: Purchasing under a group of people

Shell Price: A complete house, but client to install all the fittings



T1-Two Bedrooms

76m² 17m x 25m

Front view of the T1 stand alone two bedrooms house, on a 17x25m plot size, with a floor area of 76m²



Image showcasing the floor plan of the two bedrooms house.

Unit Price

| Completion Marketing Price | Completion Group Price |
|----------------------------|------------------------|
| \$34,200 | \$31,920 |

| Shell Marketing Price | Shell Group Price |
|-----------------------|-------------------|
| \$25,900 | \$23,620 |

Key

Marketing Price: Includes a complete house with fittings

Group Purchase: Purchasing under a group of people

Shell Price: A complete house, but client to install all the fittings



T2-Two Bedrooms 86m² 18m x 25m

Front view of the T2 stand alone two bedrooms house on a 18x25m plot size, with a floor area of 86m²

Image showcasing the floor plan of the two bedrooms house.



Unit Price

| Completion Marketing Price | Completion Group Price |
|----------------------------|------------------------|
| \$38,700 | \$36,120 |

| Shell Marketing Price | Shell Group Price |
|-----------------------|-------------------|
| \$29,310 | \$26,730 |

Key

Marketing Price: Includes a complete house with fittings

Group Purchase: Purchasing under a group of people

Shell Price: A complete house, but client to install all the fittings



T3-Three Bedrooms

105m² 20m x 25m

Front view of the T3 stand alone three bedrooms house, on a 20x25m plot size, with a floor area of 105m²

Image showcasing the floor plan of the three bedrooms house.



Unit Price

| Completion Marketing Price | Completion Group Price |
|----------------------------|------------------------|
| \$47,250 | \$44,100 |

| Shell Marketing Price | Shell Group Price |
|-----------------------|-------------------|
| \$35,790 | \$32,640 |

Key

Marketing Price: Includes a complete house with fittings

Group Purchase: Purchasing under a group of people

Shell Price: A complete house, but client to install all the fittings



T4-Three Bedrooms 125m² 20m x 25m

Front view of the T4 stand alone three bedrooms house, on a 20x25m plot size, with a floor area of 125m²

Image showcasing the floor plan of the three bedrooms house.



Unit Price

| Completion Marketing Price | Completion Group Price |
|----------------------------|------------------------|
| \$56,250 | \$52,500 |

| Shell Marketing Price | Shell Group Price |
|-----------------------|-------------------|
| \$42,600 | \$38,850 |

Key

Marketing Price: Includes a complete house with fittings

Group Purchase: Purchasing under a group of people

Shell Price: A complete house, but client to install all the fittings



T5-Four Bedrooms

135m² 21m x 25m

Front view of the T5 stand alone four bedrooms house, on a 21x25m plot size, with a floor area of 135m²

Image showcasing the floor plan of the four bedrooms house.



Unit Price

| Completion Marketing Price | Completion Group Price |
|----------------------------|------------------------|
| \$60,750 | \$56,700 |

| Shell Marketing Price | Shell Group Price |
|-----------------------|-------------------|
| \$46,000 | \$41,960 |

Key

Marketing Price: Includes a complete house with fittings

Group Purchase: Purchasing under a group of people

Shell Price: A complete house, but client to install all the fittings



T6-Four Bedrooms

157m² 21m x 25m

Front view of the T6 stand alone four bedrooms house, on a 21x25m plot size, with a floor area of 157m²

Image showcasing the floor plan of the four bedrooms house.



Unit Price

| Completion Marketing Price | Completion Group Price |
|----------------------------|------------------------|
| \$70,650 | \$65,940 |

| Shell Marketing Price | Shell Group Price |
|-----------------------|-------------------|
| \$53,500 | \$48,800 |

Key

Marketing Price: Includes a complete house with fittings

Group Purchase: Purchasing under a group of people

Shell Price: A complete house, but client to install all the fittings





A Safe, Secure And Joyful Community.



Front View



Back View

***D1-Double Stories Four
Bedrooms 196m²
21m x 25m***

Front view of the D1 stand alone four bedroom double stories house, on a 21x25m plot size, with a floor area of 196m²

Unit Price

| | |
|----------------------------|------------------------|
| Completion Marketing Price | Completion Group Price |
| \$137,000 | \$127,000 |

| | |
|-----------------------|-------------------|
| Shell Marketing Price | Shell Group Price |
| \$101,300 | \$94,200 |

Key

Marketing Price: Includes a complete house with fittings
 Group Purchase: Purchasing under a group of people
 Shell Price: A complete house, but client to install all the fittings



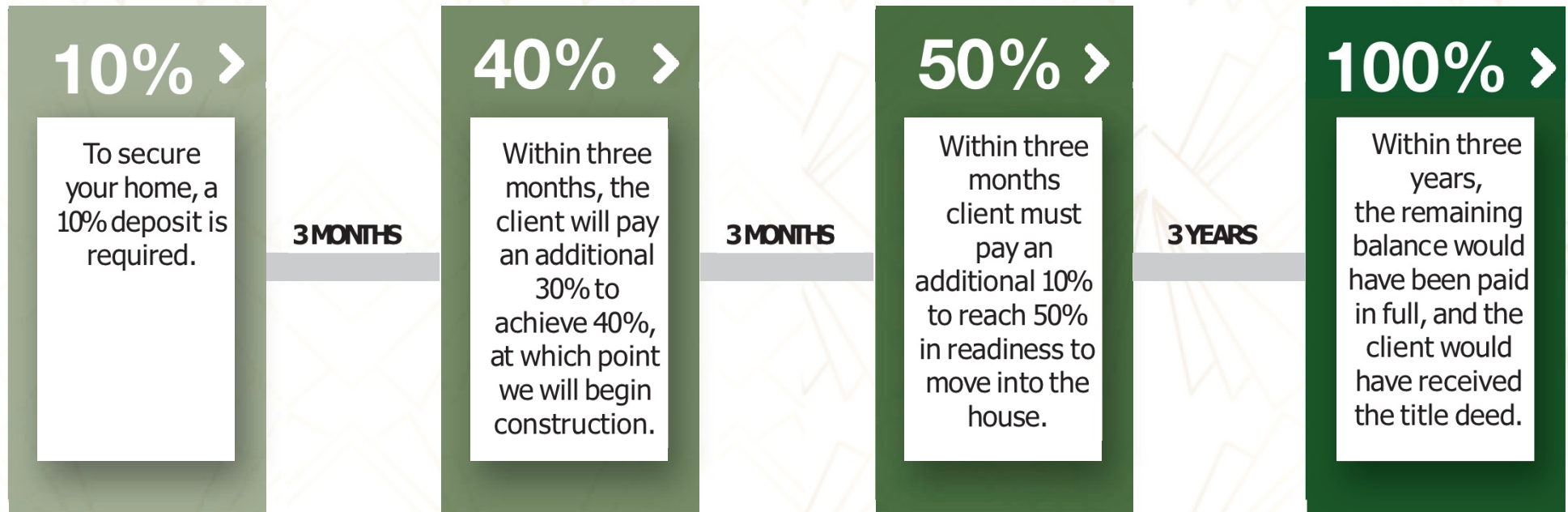
Ground Floor



First Floor

Image showcasing D1 floor plan four bedrooms double stories house.

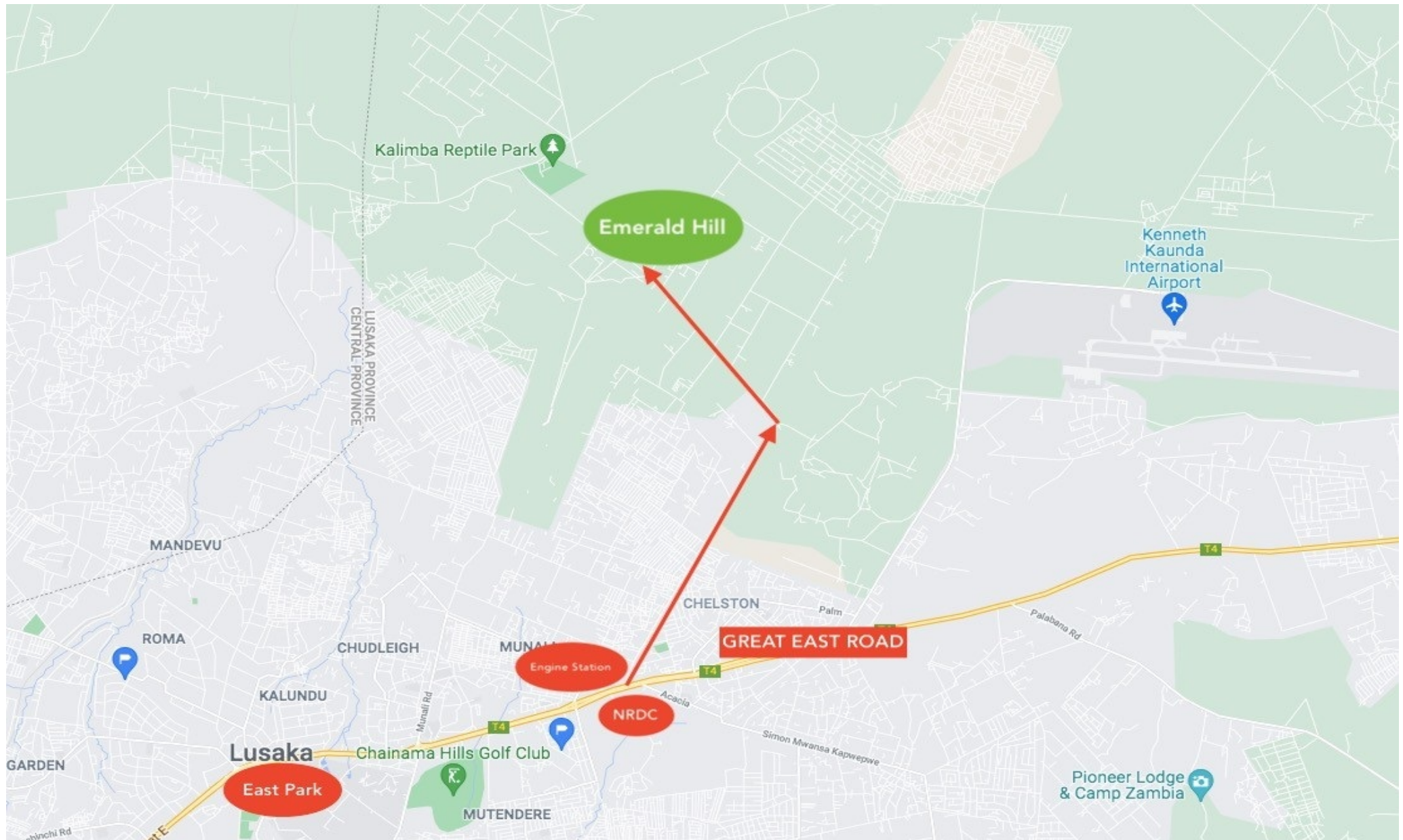
Payment Plan



NOTE:

- At 40% payment of instalments, construction will begin.
- At 50% payment of instalments, the client is allowed to take occupancy once the construction is complete.
- Payment of the remaining 50% balance within 6 months will incur no interest. For 1 or 2 years, the interest fee is 5%, and for maximum of 3 years instalments, at 6%.

Emerald Hill Location





EMERALD HILL

Own Your Home Now

Emerald Hill Chamba Valley, Lusaka, Zambia



Contact Details

African Panorama Investment Group Limited

+260 776 033 080 | +260 96 3616666

Plot No.18, Cheetah Road, Kabulonga, Lusaka, Zambia

info@africapanoramazm.com | www.africapanoramazm.com